

The HeartBeat

Wesley Memorial United Methodist Church
High Point, North Carolina

Volume 20 No. 2

February 2012

Dr. Ward casts vision for Wesley Memorial to **CONNECT, GROW, and SERVE**

On Sunday, January 29, our Senior Pastor, Dr. Ward, challenged us with a vision for Wesley Memorial's future that will enable us to more faithfully and effectively live out our Purpose: to make and sustain spiritually healthy followers of Jesus Christ who live in ways that transform the world.

The Core Leadership Team and Strategic Leadership Teams have identified three Pathways that will enable us to live out our purpose:

Pathway I – **CONNECT** all persons to Jesus Christ and the community of believers at Wesley Memorial.

Pathway II – **GROW** spiritually healthy followers of Jesus Christ.

Pathway III – **SERVE** as the hands and voice of Christ at Wesley Memorial, in High Point, and beyond.

The work of the two teams continues. Three goals for each Pathway have been identified. On Sunday, January 8, members of the Strategic Leadership Team spent three hours generating ideas for activating the goals that are currently being utilized to create a strategic plan. We anticipate the completion of the entire process prior to Easter. Then we can get on with living it out!

Please continue to pray for the teams leading this process as well as our entire congregation. And... continue to ask God how you will be part of enabling Wesley Memorial to **CONNECT, GROW, SERVE**.

Building Usage Changing to Better Use Resources

As part of the budgeting process for 2012, the Facilities team, Trustees, and Church Council approved a change in how we utilize our buildings that should offer significant savings for utilities and maintenance. Our buildings have sophisticated controls for heating and cooling that enable us to vary settings in multiple zones throughout the buildings. In recent years we have largely run all the buildings on similar settings regardless of usage. This meant that we were heating and cooling the buildings for a collective 1700 hours weekly.

With changes in how we manage the system, we anticipate dropping the occupied hours by approximately 60%. The most significant change will be in how we use the Adult Education area. Rather than keep the building on occupied status 10-12 hours seven days a week, the Facilities Team, Trustees, and Church Council have approved a plan to reduce use of that building to its two busiest days: Sundays and Wednesdays.

Clergy and staff have worked with leaders of the various teams and groups that meet in the Adult Education area and Asbury Room on other days to find new locations in other buildings. We are grateful for the flexibility that these groups have shown in locating new spaces.

Please know that we will continue to review how this change works in real life. We have made provision for varied settings for the Chapel, Asbury Room, and Sanctuary that will protect the instruments in each space. We also have the ability to raise temperatures as needed for the special needs including funerals.

We anticipate these changes will enable us to better use our resources, freeing them for ministries and initiatives that will enable us to **CONNECT, GROW AND SERVE** in new and exciting ways.

Ways to serve ~ pg 2

Congregational Care ~ pg 6

Church Camp ~ pg 3

Children & Family ~ pg 7

Lenten Study ~ pg 6

Memorials ~ pg10-11

Looking for a way to serve?

Wesley Memorial is known throughout the community for our active service. If you are looking for a new place to plug in consider one of these opportunities.

*Father's Table Dinners at Open Door Ministries:

Every third Monday Wesley Memorial serves dinner at Open Door Ministries. The meal is cooked when you arrive at 5:45pm and you serve the guests until 7 pm. All you need to bring is a servant's heart. To sign up for an upcoming month please contact Mary Webster at marymwebster@yahoo.com or call 327-6846.

*Tutor a student at Fairview Elementary:

Many of your fellow Wesley Memorial members already serve by tutoring a student at Fairview Elementary. Join them and make a big difference in a child's life by signing up to tutor. Contact Catherine Niebauer at jumpstart@northstate.net or 883-6434, ext. 24 for more information.

*Henderson Settlement Mission Trip:

Spend a week in July serving our neighbors in Frakes, KY on our church's annual Henderson Settlement Mission Team. Wesley Memorial has been going to Henderson Settlement for nearly 20 years. You are guaranteed to get more out of this trip than you give! For more information or to sign up for our July 8-14 trip please contact Meredith Martin at mmartin@wesley memorial.org or 884-2204, ext. 239.



2011
Henderson
Settlement
Team

Cultural Awareness Mini Series continues...

Make plans now to attend ~

- **Poverty Simulation: February 12, 5:30-8:30 pm:** The United Way of Greater High Point is coming to Wesley Memorial to help us better understand how people who live daily in poverty experience High Point differently from us. This is an awesome experience for persons of all ages. If you are passionate about serving the poor please plan to attend this event! Sign up with Meredith Martin, mmartin@wesley memorial.org, or 884-2204, ext. 239.
- **The Help Screening and Panel Discussion: February 26, 3-6 pm:** Come to discuss the increasingly popular book/movie, *The Help*. Our church will be viewing the movie at 3 pm, followed by a panel discussion at 5 pm featuring diverse panelists who will comment on the book and their personal experiences as they relate to *The Help*. Desserts will be served!

TRAVEL NEXT SUMMER WITH A PURPOSE!

Only 3 spaces left on our cross-generational July 10-27 mission trip to Nakuru Kenya, where we work serving orphans and vulnerable children in school or in our pre-schools; with women trying to find ways to support their families through sewing, knitting and poultry farming; with folks suffering from HIV/AIDS who need to know someone cares; or by serving folks who need basic health care in our clinic. Opportunities are also available to do painting and basic carpentry/repairs. All-inclusive costs approximately \$3600-\$3800, depending on airline rates when booked. Families with teenagers welcome.

Contact Diane Hamrick, 210-3765, dqhamrick@aol.com; www.kenya-partners.org.



Contact: **Rev. Meredith Martin**
Associate Pastor for Missions,
Evangelism and Involvement
884-2204, ext. 239
mmartin@wesley memorial.org

Lenten Bible Study for Students **24 Hours that Changed the World**

Students will experience the anticipation surrounding the Last Supper, the shock of Jesus' betrayal and arrest, the anxiety surrounding his trial, the anguish of his suffering and death, and the glory of the empty tomb.

Beginning on Wednesday, February 29 and continuing until the Easter Celebration each Wednesday Night we will be examining seven key events from the 24 hours leading up to Jesus' death and burial. Please plan on attending and committing to this focused and crucial time of study.

Myers Park UMC Parent Event **Building a Faith That Lasts**

February 11, 2012, Myers Park United Methodist Church will be hosting a seminar by Doug Fields and Duffy Robbins, Building A Faith That Lasts. The seminar is for youth directors, volunteers, and parents and will be centered on helping young people develop a faith that goes beyond high school, a faith that will last beyond youth groups. I would love for you to go ahead and get this date on your calendar. The seminar will simply benefit all who come. You can register by calling Adam or Melissa at the church. The cost is \$25 and we plan on taking a church bus to Charlotte.

Scout Sunday **Celebrate with Us!**

On February 19, we will recognize and celebrate the achievement of students who are a part the Scouting Ministry hosted and supported by our Church. Please be a part of congratulating those students who achieved Eagle Scout or received their Gold Award.

Crystal Ball **Mardi Gras!!!**

The annual High School Crystal Ball is scheduled for **March 3**. This year's event will be based around a Mardi Gras theme. Students who are active members of the church can collect their ticket beginning in February. Entrance to Crystal Ball is \$12.00 per person. **Parents and members are encouraged and needed to volunteer for this event.**

Church Camp 2012 **June 10-16**

Planning for Summer Camp 2012 at Camp Linn Haven is already underway!!! A secret theme and exciting lessons are being prepared and you don't want to miss out on this wonderful Wesley Memorial experience.

This year we are so excited to be opening the camp up to 6th thru 10th grade students. We believe that greater opportunities to attend camp will only strengthen each student's faith and friendships. 11 & 12 grade students are encouraged to apply to serve as Student Counselors and college and adult volunteers are always needed.

Church Camp Cost: Campers - \$375
Student Counselors - \$275

If you are able please consider making a donation in support of Church Camp. Your gifts allow us to be at our best each and every year!



Contact: **Rev. Adam Vernon**
Associate Pastor for Student Ministries
884-2204, ext. 255
avernon@wesleymemorial.org
www.wmyouth.org

United Methodist Men

The Wesley 100
is serving breakfast ~

February 18, 8 am in the Dining Hall...



All men are welcome to join us!

Wednesday Dinners continue!

Many thanks to the men of Wesley 100 who continue to prepare Wednesday dinners! Purchase your ticket or make a reservation today. Look at the scrumptious menu items below. All proceeds from the meals will be used for ministries within the church.

February 8 – Fried Chicken, Turnip Greens, Mashed Potatoes & Gravy, Carrots, Homemade Bread or Biscuit

February 15 – Glazed Meatloaf, Diced Potatoes, Green Beans, Homemade Bread or Biscuit

February 22 – NO DINNER -- ASH WEDNESDAY

February 29 – Chili, Salad, Pimento Cheese Sandwich

Cost is \$6.00 for adults and \$3.00 for children ages 2-11; children under 2 are free. There will not be a separate children's menu unless indicated.



Women Of Wesley

WOW Women's Bible Study on Thursday mornings

Susan Meisky will be teaching a class on Thursday mornings from 9:15 am-11:15 am (beginning Feb. 2-March 22). It is Pricilla Shira, Beth Moore, and Kay Arthur's study entitled "Anointed, Transformed, and Redeemed." This class will begin in the Arts and Crafts Room then discussion will move into Youth Gathering Area. This Bible study is for women of all ages. Please reserve your place for this class by calling the Front Desk (884-2204). If you need childcare, please let us know. (We will need to know the ages and number of children.) Come and learn more about the power of God!

Thank you Wesley Memorial!

On behalf of the Kenya teams, thank you for your support of the Carrabba's dinner. We sold ALL 500 tickets for the event which will do unbelievable things in Kenya this coming year. 100% of the profits will benefit children in school, persons needing medicine, deworming activities, purchasing school supplies and many other projects. A number of you commented how smoothly the event happened.

What was not seen were the many volunteers that baked, served desserts, poured tea, set up the tables, helped to clean up after dinner or eagerly helped with the many other tasks that had to be done. We are also very appreciative to the church staff that assisted in so many ways. Finally, this could not have happened if you were not so generous and supportive by purchasing tickets. This is another example of Wesley Memorial "in mission around the block and around the world."

THANK YOU!

We want to thank you for making our first Advent and Christmas at Wesley Memorial so very special. All the services and activities of the seasons were so meaningful. Your cards and gifts were special additions to our celebration of Christ's birth. All through our first months among you, everyone on the staff and in the congregation has gone the extra mile to help us feel at home and welcome. We truly "thank God for every remembrance of you." Please know that our wish for each of you is that the joy and peace of Christ among us will be yours throughout the New Year.

Until Sunday, Grace and Peace,
Miriam and Al Ward

**Wesley Memorial's purpose is
to make and sustain spiritually healthy
followers of Jesus Christ who live in ways
that transform the world.**

for our Older Adults...

Live Alive

Tuesday, February 21

Program: Brian Donley, former president of John Wesley College

Live Alive meets every 3rd Tuesday of the month:
10 am – Register for Best Time Trips, Play Bingo in the Fellowship Hall, and get your Blood Pressure checked in the Fellowship Hall Lobby
11:45 am – Lunch in the Dining Hall with the program following. Please call in your reservations to the church (884-2204). **We ask that reservations be made by 10 am on February 17.**

Menu for Feb. 21: Country style steak, white rice, peas, cabbage, bread and dessert. See you there!

Make plans now for these upcoming Live Alive programs:

March 20 – Performance: Pat Wade, pianist
April 17 – Speaker: Aaron Martin, retired astronomy professor from GTCC
May 15 – Speaker: Rob Jacobs, Bee-keeper

for our Adults...

Lenten Study – Adam Hamilton’s 24 Hours that Changed the World

Lent is a time for us to prepare our hearts and our souls for Jesus' death and resurrection. Part of that preparation is delving into the Bible and learning with fellow Christians. For our Lenten study, we will be learning about Jesus' last 24 hours on earth. This class will meet weekly, three times a week (similar to our Advent study). We will be offering the class on Sunday @ 6pm, Wednesday @ 6:30pm, and Thursday @ 9:15am. The class begins February 26 (Sunday). If you want a book, the cost will be \$12.

The schedule will be as follows:

- Feb 26, 29, Mar 1 – The Last Supper
- Mar 4, 7, 8 – The Garden of Gethsemane
- Mar 11, 14, 15 – Condemned by the Righteous
- Mar 18, 21, 22 – Jesus, Barabbas, and Pilate
- Mar 25, 28, 29 – The Torture and Humiliation of the King
- Apr 1, 4, 5 – The Crucifixion
- Apr 11, 12 (Wed & Thurs only) – Christ the Victor

See you there!

Best Time Trips:

Make plans to join us!



March 3 - Wytheville, VA - Wohlfahrt Haus Dinner Theatre. Cost: \$66; Depart: 9 am and return at 6:30 pm
Cost includes transportation, lunch and program

March 26-28 - Macon, GA - Cost: \$253, includes transportation, lodging, entrance fees, step-on guide, breakfast and one dinner. Depart 8:30 am; return 6 pm. Tour historic house museums, see the cherry blossoms, and much more!

To inquire about cost and sign-up, contact Dwight Story at 475-6280.

Day Retreat for Adults

Mark your calendars! We will be having another day retreat on Saturday, March 24 from 9:30am-3:30pm. We will be exploring hospitality and how we can create a welcome space for God, ourselves, and for others. The cost will be \$12, which includes lunch and materials. If you are interested in attending, please register by contacting Melissa Coley at ext. 229 or mcoley@wesleymemorial.org.

“Do not neglect to show hospitality to strangers, for by doing that some have entertained angels without knowing it.” -Hebrews 13:2



Contact: **Rev. Kathy Barba Pierce**
Associate Pastor for Adult Education and Spiritual Formation
884-2204, ext. 238
kathybp@wesleymemorial.org



My time at Wesley Memorial has been a blessing in my life. Greeting those coming in, helping with Rev. Richard Howle's Caring Ministry, the Prayer Network, as well as attending Wednesday communion and Bible study, are just some of the ministries I have enjoyed. You have all found a place in my heart and I take many special memories with me as I retire. I look forward to my return visits, as we say hello again.

With love, Anne Davis

The State of Congregational Care at Wesley Memorial

Congregational Care Ministry at Wesley Memorial is a strong and effective ministry. We are blessed with ordained clergypersons, Stephen Ministers and many lay persons who are committed to caring for those who need care. Many volunteer opportunities exist within this ministry; please prayerfully consider how you want to serve and then contact Richard Howle at 884-2204, ext. 270, or rhowle@wesleymemorial.org.

A. VISITATION: We have twenty lay persons who meet monthly and are assigned contacts to be made with members who have had a death in their family, members who have been hospitalized recently, and church members who live in nursing homes and retirement communities. These lay people make over five hundred contacts each year.

B. PILLOW MINISTRY: Congregational Care visitors make and take pillows to members who have broken arms, legs, or wrists, had knee surgery or have major back and hip problems. Since this ministry began three years ago, 100 pillows have been made and given to members.

C. UPPER ROOM MINISTRY: The UMW are now purchasing The Upper Room devotional magazine in large print which our Pastor for Congregational Care, Richard Howle, takes to members who are living in retirement communities, nursing homes or who are home bound. We provide 50 people with the Upper Room six times a year.

D. WEDNESDAY COMMUNION & PRAYER SERVICE: This midweek worship service is held from mid-September through mid-May each year. The

services are led by Richard Howle. The service is held at 11 am in the Chapel and ends in time for those who wish to attend the mid-week Bible study.

E. PRAYER SHAWL MINISTRY: Over 1,000 prayer shawls and other items have been made and taken to church members who have been or who are ill, physically impaired or who face other health issues. The "knitters" gather to make the prayer shawls every Wednesday at 1 pm in the Arts and Crafts Room.

F. POINSETTIAS: Delivering poinsettias to our older members at Christmas has been a tradition at Wesley Memorial for many years. They are delivered by our youth and by our Congregational Care visitors. Our largest number in many years, 90, were delivered this past December.

G. HOSPITAL VISITATION: Members of our clergy staff are assigned one day a week to visit members who are hospitalized. There are days when we have members in hospitals from High Point Regional to NC Baptist, Forsyth Medical Center, Moses Cone Medical Centers and Duke University Hospital. (It is important that someone notify the church office when a member is hospitalized. Hospitals no longer notify us and we have no other way to know about one's hospitalization.) In addition to daily hospital visits the clergy staff and some of our Stephen Ministers provide the "On Call Ministry" from Friday afternoon through Monday morning. The On Call Ministry enables our church to respond to any emergencies which come up over the weekend. The phone number of the person on call will be provided by calling the Church Office (884-2204) during that time.

Cornerstone Kids Wednesday Nights

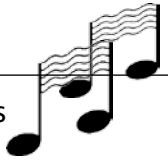
On Wednesday nights beginning January 11 the children at Cornerstone Kids have been putting into practice the Matthew 25:35-40 scripture.

I was hungry and you fed me,
I was thirsty and you gave me a drink,
I was homeless and you gave me a room,
I was shivering and you gave me clothes,
I was sick and you stopped to visit,
I was in prison and you came to me.

- January 11** - Children wrote cards & drew pictures to those who are incarcerated
- January 18** - Welcome gifts were made for visitors to our church
- January 25**- Sandwich & Back Pack Ministry
- February 1** - Clothing collection boxes
- February 8** - West End Ministries or Ward Street Mission clothing closets
- February 15** - Make gifts to take to members at local nursing homes

All children ages 4 through 5th grades are invited to be a part of the activities from 6:30-7:30 pm.

Music...



The Music Program of Wesley Memorial is pleased to host the choirs of High Point University in their Winter Choral Concert entitled "Crown Jewels: Treasures from Great Britain" featuring music for royal coronations, weddings and funerals from over the centuries. February 25 at 7:30 pm. Seating is limited, and complimentary tickets are available by calling 841-9209 or reservations@highpoint.edu by Wednesday, February 22.

Calling all Second through Fourth Graders! Join us as we perform a new musical entitled "The Lost Boy: Jesus in the Temple." We need fifteen students who can give time for seven rehearsals over nine weeks at a convenient time for all participants. Auditions will be held February 19 at 2 pm in the Choir Room. The performance will be April 29. For more information contact Michael Dougherty!



Contact: **Dr. Michael Dougherty**
Director of Music and the Arts
884-2204, ext. 236
mdougherty@wesleymemorial.org

Children's Sunday Schools



On February 26, the children 4 years old through 5th grade will come together during Sunday school to experience our next Godly Play lesson, the Exodus Story.

Save the Date!
VBS 2012
July 16-20; 9 am - 12 pm
(Rising 3's through 5th Grade)



Contact: **Debbie Foust**
Director of Children & Family Ministry
884-2204, ext. 225
dfoust@wesleymemorial.org

Retirement Announcement



As the February Heart-beat was preparing to print, Jan Jessup, one of our housekeepers announced her plans to retire at the end of February. She has served faithfully with us for 25 years. We are grateful for her work and will include more information in the March edition of the HeartBeat.

Front Desk Hours Changing

As Anne Davis prepares to retire, we will be altering the hours for the Front Desk to 8:30 am to 5 pm Monday through Friday. This new time will be more reflective of how our members and friends actually make use of our Front Desk staff. We will have a staff person at the desk from 8:30 am to 2 pm each day and are delighted that volunteers are willing to serve from 2 pm to 5 pm each day. The change in Front Desk times will begin on Monday, February 6.

wesley memorial school

NURSERY • PRESCHOOL • KINDERGARTEN • AFTERSCHOOL

Wesley Memorial School ~where every day is an adventure in learning and exploring for young children!

Time To Register Your Child For 2012-13 School Year Is Here!

Nursery Day:	Classes for Infant Beginners, Toddlers, Twos 9:00-12:00 noon 1,2,3,4, or all 5 days/week
Preschool:	Classes for Children age 3 by Aug 31 9:00-12:00, with "Lunch Bunch" on Weds or Thurs (T-Th groups) until 1:00 2, 3 or all 5 days/week Classes for Children age 4 by Aug 31 9:00-12:00; "Lunch Bunch" on Weds 3 or 5 days/week
Kgt Fives:	Classes for Children age 5 by Aug 31 9:00-1:30 daily with lunch at school 5 days/wk only
Extend-The-Day Childcare Available!	Before-School Care, 8:00-9:00 am After-School Care, 12:00-1:30 pm
The Way Station Afterschool Program	School-age care for children 4 yrs through 5th grade 1:30-6:00 pm

"Early Bird" priority registration for fall is over, if you delayed in getting your child registered, please hurry in to the WM School office!

We're filling up FAST for the 2012-13 school year! (Note: less space available now than at this point last year.)

Accepting Waiting List families in mid- February Please call 884-4232 to talk with Susan Sumpter or Susan Kelley. We'll be delighted to answer questions, give you a tour, and help design a "custom plan" to meet your school and childcare needs!

Parenting Class – Coming in February! . . .

PARENTING THE EARLY YEARS

10 Biblical Traits Your Kids Will Remember You For

Dates: 6 Monday mornings, beginning Feb 6

Time: 9:15-10:30 am

Faciliators: Susan Sumpter & Susan Kelley

For: Parents/Grandparents of young children (childcare available)

Being a PARENT is the most important calling you will ever have. Even when we are using good parenting techniques for discipline & motivating, your child's character hinges on the traits YOU exhibit as a parent. While there are plenty of things about your child's life that are unpredictable and beyond your control, you can choose to be the kind of parent you want to be. Let's explore HOW together!

Upcoming Dates for WM School:

☞ **Friday, Feb 24** – Teacher's Workday/ Parent-Teacher Conferences

☞ **Thursday, March 1**, 6:30-8:00 pm – "IT'S FAMILY NIGHT" AT WESLEY MEMORIAL SCHOOL!

6:30-7:15 . . .

Children are the "teachers" for the evening & will engage the grown-ups in Nursery, Preschool & Kgt work. Moms, Dads, Grands & visitors will be the "students." Everyone gets to paint a picture! Create a graph! Engineer a block structure! Write an original short story! (The boys & girls will show you how.) Wonderful opportunity to get-acquainted with our WM School programs, see classrooms & meet staff.

7:15-8:00 . . .

It's off to the Dining Hall to make ice cream sundaes and hear our Kindergarten Fives sing. Of course, expect audience participation!



Contact: **Susan Sumpter**
Director of Wesley Memorial School
884-4232
ssumpter@wesleyemorial.org

United Methodist Women

UMW Board Meeting - Monday, February 6, 10:30 am in Conference Room #1.

Day of Prayer and Self Denial - Thursday, February 16, 11:00 am in the Chapel. First Methodist will give the program and then we'll have a simple lunch in the Asbury Room. Reservations by February 14 to Betty Royal, 884-5364.

Mission Education and Interpretation - District Mission Study to be held on February 18 at First Methodist Church in Randleman, NC. A continental breakfast will be provided. Those attending will gather in the front circle parking lot at Wesley Memorial at 8 pm to carpool. Make your check for the luncheon payable to Wesley Memorial UMW for \$6.50 and mail to Joyce Stephens, 1113 Gatehouse Road, High Point, 27262 by February 9, and write "District Mission Study Luncheon" on the memo line. Contact Barbara Strowd for more information, 472-4710 or bstrowd@northstate.net.

High Point District Prayer Breakfast - Saturday, March 17, 9 am in the Wesley Memorial Dining Hall.

Circle Meetings for February:

Circle #1 YUMS: Wednesday, February 1, 6pm in Room D205

Circle #3 The Angel Tree Circle: No Meeting

Circle #5 The Friendship Circle: No meeting

Circle #6: Monday, February 20, 7 pm TBA

Circle #8: Monday, February 13, Small Dining Room

Circle #9: Tuesday, February 21, 10:30 am in the Dining Hall

Circle #11: Monday, February 20, 11:30 am in the Small Dining Hall

Events and Activities ~ Weekly Calendar

Sundays

8:30am-Worship Service/Chapel
8:45am-Contemporary Worship/FH
9:45am-Contemporary Worship/FH
9:45am-Sunday School
11am-Worship Service/Sanctuary
4pm-Youth Cantata Choir/Choir Rm
4:30pm-Youth Drama & HS Praise Team
6pm-MYF/Youth Area

Mondays

8am-Exercise Ladies/C101
8am-WM School Childcare
9am-Wesley Memorial School
9am-Praying w/the Body:Psalms/Youth Area
10:30am-Jean Stockton's Bible Study/Conf. Rm #3
11:30am-Children's Chapel
12noon-WM School Childcare
1:30pm-After School Day Care/Way Station
7pm-Boy Scout Meeting
8pm-AA Mtg

Tuesdays

7am-Small Group/Conf. Rm #3
8am-WM School Childcare
9am-Wesley Memorial School
9:30am-Staff Worship/Soul Cafe
9:50am-Staff Meeting/Conf #3
12noon-WM School Childcare
1:30pm-After School Day Care/Way Station

5pm-Junior Girl Scouts/Arts & Crafts Rm
6:30pm-Cadette/Sr. Girl Scouts/Arts & Crafts Rm
6:30pm-Cub Scouts/Boy Scout Room

Wednesdays

8am-Exercise Ladies/C101
8am-WM School Childcare
9am-Bulletin Review/Conf #3
9am-Wesley Memorial School
11am-Mid-Week Communion/Chapel
12noon-Bible Study Lunch/DH
1:30pm-After School Day Care/Way Station
1:30pm-Prayer Shawl Ministry/Arts & Crafts Rm
4pm-Wesley Ringers/Youth Handbells/Balcony
5pm-Carillon Choir/Choir Room
5:15pm-Serendipities
5:30pm-Wednesday Dinner/DH
6:30pm-Youth Bible Study/Youth Area
6:30pm-Financial Planning/Conf. Rm #2
6:30pm-Grief:Exploring Our Own and Other People's Grief/D211
6:30pm-Where is God Leading the Church? /D208

Thursdays

8am-WM School Childcare
9am-Wesley Memorial School
9:15am-WOW Bible Study
12noon-WM School Childcare
1:30pm-After School Day Care/Way Station
6pm-Prayer/A224
6:30pm-ACTS Unity Group/A224

7:15pm-Adult Handbell Choir/Balcony
8pm-AA Meeting/ AIAnon

Fridays

8am-Exercise Ladies/C101
8am-WM School Childcare
9am-Wesley Memorial School
12noon-WM School Childcare
1:30pm-After School Day Care/Way Station

Saturdays

8am-Contemporary Rehearsal/FH

Our Prayer Shawl Ministry has made and delivered **over 1,000** shawls, blankets, sweaters and other items!



You are invited to join this wonderful group on Wednesdays at 1:30 pm in the Arts & Crafts Room. Contact Laura McFalls, 882-1054 or Lee Huff, 887-9165.

We Remember and Honor Our Loved Ones

Memorials given through December 2012

IN MEMORY OF:

Marcus Lafayette Aderholdt: Thomas & Bonnie Broadwater, Elizabeth Conner, Jennifer & David Covington, Glenn & Carole Simeon Lesley, Sallie Phillips, June Safrit, Kirk & Sherry Wilson, Sarah Woollen

Patricia Stansbury Anderson: Bill Anderson, June Safrit, Sarah Woollen, Tammy Wright

Mary Wood Arthur: Liz & Fred Jones

Ruth Briles: Ruth Craven

Evelyn Rothrock Byrum: Virginia Griffith

Martha Mackie Caudell: Bonnie Cashion, Richard & Betty Jo Kellam

Harold Craven: Ruth Craven

Elizabeth Highsmith Dunbar: Dr. & Mrs. Ralph Brooks, Jr., Phillip & Judy Farlow, Mrs. Grady Goldston, Dr. & Mrs. George Highsmith, Rex & Linda Walser

William Gaston Ervin, Sr.: Pogie Austin, Thomas & Bonnie Broadwater, Bonnie Cashion, Susan & Rob Culp, Harold & Jerri Edwards, Tom & Patsy Fields, Mrs. Grady Goldston, Mr. & Mrs. Nat Harrison, Tom Kearns, Jr., Strupe & Betty Lackey, Harold & Betty Martin, George & Patty McLarty, Austin & Beatrice Pierce, Ray & Liz Rogers, June Safrit, Karen Renee Salley, Patsy & Charlie Surlis

Patricia Johnson Garrison: Richard & Betty Jo Kellam

Pauline Benson Wall Greene: Bill & Carlene Blackmon, Bill, Lisa, Audrey & Tiffany Clodfelter, Elizabeth Conner, Mr. & Mrs. W. P. Davidson, Alice Ervin, Joseph Gamble, Kenneth Geddie, Jr., Lillian Kimrey, Mary Lyles, Eula Lyons, Harold & Betty Martin, George & Patty McLarty, Pitts, Hay & Hugenschmidt, Mary Rhodes, Patsy & Charlie Surlis

Dr. & Mrs. N.M. Harrison, Sr. (Parents of Nat Harrison): Betty Anne & Nat Harrison

Myrtle Johnson Hoffman: Charles & Pat Stevens, Donna & Royster Tucker & family

Mr. & Mrs. J.A. Johnson (Parents of Betty Anne Harrison): Betty Anne & Nat Harrison

Thomas Sutton Kester (Brother of Bill, Gene & Buck Kester): Liz & Fred Jones, Sarah Kemm, Liz Rogers, Dr. & Mrs. Mike Samuel

Harold Lee Kirkman: Kenneth Geddie, Jr.

Lawrence Matton, Jr.: Virginia Griffith, Mary Lyles, Sarah Woollen

Susan MacKenzie (Sister of Nancy Perryman): Jerry Bain

Wade Hampton McInnis: Bonnie Cashion, Virginia Griffith, Harold & Betty Martin

Ann S. Powers (Sister of Jim Stephens): Mary Lyles

Jane Cameron Sizemore: Liz & Fred Jones

Linda McEwen Smith: Liz & Ray Rogers

Joseph Scott Stowe (Brother of Leslie Culp): Pat & Everette Grayson

Emma Leigh Page Thomas: Pat & Everette Grayson, Fred & Liz Jones

Stuart Candler Thomas (Brother of John Thomas): Pat & Everette Grayson, Liz & Fred Jones

Martha Nell Tucker: Dr. Elizabeth Harrison

Dollie Patterson Vaughn: Lawson Ingram, Liz & Raymond Rogers, Mike & Rachel Smith

Clarence & Maureen Wagner: Kirk & Sherry Wilson

Dr. & Mrs. Fred Weller (Parents of Ed Weller): Herb & Cheryl Bolick

Myrtle Wells: Bill & Carlene Blackmon

Don & Frances Wilson (Parents of Kirk Wilson): Kirk & Sherry Wilson

James Millikan (Kan) Woollen, Jr. (Son of Sarah Woollen): Bill & Carlene Blackmon, Liz & Fred Jones, June Safrit

Our Sympathy to:

Betty Jo Farrington in the death of her daughter-in-law, Anne Farrington on Dec. 24.

Linda Young and family in the death of her mother, Lucille Upchurch on Jan. 5.

Chuck and Penn Wood in the death of their sister, Laverne Wood on Jan. 12.

Olive Frye in the death of her sister, Louise Melson on Jan. 5.

Joe Gamble in the death of his sister, Bernice Breedlove on Jan. 26.

Stephen Ministry



This ministry was named for Stephen who was one of the first lay people commissioned by the Apostles to provide caring ministry. (Acts 6)

If you are interested in Stephen Ministry training, contact Laura McFalls, 882-1054.

If you wish to have a Stephen Minister assigned to you, contact Lou Dean Howard, 885-5789.

All Contacts are Confidential!

IN HONOR OF:

Dr. Bob Arthur: Mike & Teresa Flack
Dr. & Mrs. Ed Auman: Bonnie Cashion
Mrs. David Cole: Bonnie Cashion
Dr. & Mrs. Howard Coble & Kathy: Mike & Teresa Flack
Mrs. Thayer Coggin: Bonnie Cashion
Mrs. Mary Clark Cole: Mrs. Dot Coggin
Dr. Michael Dougherty: Mike & Teresa Flack
Ginny Fick: 8th Day Unity Group
Dr. & Mrs. Rod Fulcher: Mike & Teresa Flack
Joe Gamble: Mike & Teresa Flack, Carolyn Watson
Mr. & Mrs. John Gillespie: Mike & Teresa Flack
Jan Glover: Mr. & Mrs. Dudley Moore
Tom Gore: Mary Lib Miller
Mrs. Ginny Griffith: Bonnie Cashion, Mrs. Dot Coggin
Mrs. Carol Harris & Mary Carol: Mike & Teresa Flack
Elna Hodges: Mr. & Mrs. Dudley Moore
Hospice of the Piedmont: Mrs. Dot Coggin
Rev. Richard Howle: Mike & Teresa Flack
Rev. Richard & Elizabeth Howle: Anne Davis, Mid-Week Communion
Carol & Ray Hutchins: Gloria Cowan
Mr. & Mrs. Fred Isenhower: Bonnie Cashion
Susan Kelley: Sarah Woollen
Faith Key: Carolyn Watson
Bob Marsh: 8th Day Unity Group
Rev. Meredith Martin: Mike & Teresa Flack
Caroline & Bill McGuinn: Constance Gerard & John Kirkman
George & Patty McLarty: Brian Buchanan family
Hilda Owen: Bonnie Cashion, Mrs. Dot Coggin
Rev. Kathy Barba Pierce: Mike & Teresa Flack
Rev. Russ Pierce: Mike & Teresa Flack
Frank Pifferetti: Mike & Teresa Flack
June Safrit: Bonnie Cashion, Mrs. Dot Coggin
Carolyn, Don & Luke Shaw: Mr. & Mrs. Dudley Moore
Bishop & Mrs. Tom Stockton: Bonnie Cashion, Mrs. Dot Coggin, Mike & Teresa Flack
Dwight Story: Mary Lib Miller
Susan Sumpter: Sarah Woollen
Iris Sunshine: Carolyn Watson
Mrs. Bootsy Tucker: Mrs. Dot Coggin
Rev. Adam Vernon: Mike & Teresa Flack
Dr. Al Ward: Mike & Teresa Flack, Family of Martha Mackie Caudell, Wednesday Bible Study
Mrs. Mary Wesson: Mrs. Dot Coggin
Mrs. Marcia Williams: Mike & Teresa Flack
Pat Williard: Mr. & Mrs. Dudley Moore
Mrs. Sarah Woollen: Mike & Teresa Flack
Mr. & Mrs. Vann York: Bonnie Cashion
Louise Zimmerman: Carolyn Watson

News from...



...The Way Station After School Program

Attention Working Parents!

- Are you looking for all-day care for your child this summer? (just one week or more)
- Are you looking for afterschool care for your child this fall?

The Way Station is the Christian “home away from home” to meet your child’s needs!

We invite you to visit The Way Station! Schedule tours with Susan Sumpter, 884-4232 or Michele Kinley, 884-8067. Call for an information packet describing fees, daily schedule, activity times such as crafts, homework help, recreation and fieldtrips.

This vital Afterschool Ministry of Wesley Memorial has been in operation since 1996. The Way Station serves from 35-42 children of elementary school-age. Children completing Fours, and who will be age 5 by August 31 are eligible for the summer session.

The Way Station facility is located downstairs, adjacent to our Fellowship Hall. Open full-days in summer, 7:30 am-6:00 pm. During the school year, hours are 1:30-6:00 pm – with full days available on school holidays, teacher workdays and most snow days. Outstanding staff have completed NC Certification in Basic School Age Care (BSAC) and how they nurture the kids . . . Michele Kinley, Merri Mabe, Wendy Steiss and Jana Brotherton.

Registration for Summer and Fall is now open at The Way Station!

“I love, love, love The Way Station. It has been a gift to me as a parent. The staff is kind, caring and have really gotten to know my children which makes a huge difference. They always make an effort to tell me about my children’s day. The staff takes the time to really talk to my children, which helps me immensely when trying to determine their moods/behavior.”

-- Tracie Blackmon (mom of Briley, Parker & Cooper)

ALL-YOU-CAN-EAT

Pancake Supper



**SHROVE
TUESDAY**

Adult Tickets

\$5

Children under 12
eat free

Tuesday, February 21

5:30 pm - 8:30 pm

Dining Hall

Wesley Memorial United Methodist Church

Sponsored by the United Methodist Men (Wesley 100)
in conjunction with and in support of
Wesley Memorial Ministries.

HEARTBEAT (USPS 327-700)

Published Monthly by Wesley
Memorial United Methodist
Church. Mailing address P.O.
Box 5289, High Point, NC 27262.
Subscription \$1.00 per year pay-
able out of regular contributions
to church budget. Periodical
postage paid at High Point, NC
27260. Send change of address
to Postmaster, P.O. Box 5289,
High Point, NC 27262



*Giving has never been
easier! Visit*

*www.wesleymemorial.org
to learn more!*

Did you know that Sunday Bulletins and Sermons are available on the church website? On the home page in the left side bar, click "Sermons" or "Sunday Bulletins" and click on the date you want.

Information for the HeartBeat newsletter is due the 2nd Thursday of the month prior to the issue date. Information for church bulletins is due on Friday the week prior.

Church Office: (336) 884-2204

Fax: (336) 884-4313 Heartline: (336) 883-9721

Weekend On-call Pastor: (336) 848-6030

Website: www.wesleymemorial.org

WESLEY MEMORIAL
A UNITED METHODIST CONGREGATION

1225 Chestnut Drive ~ P. O. Box 5289
High Point, North Carolina 27262